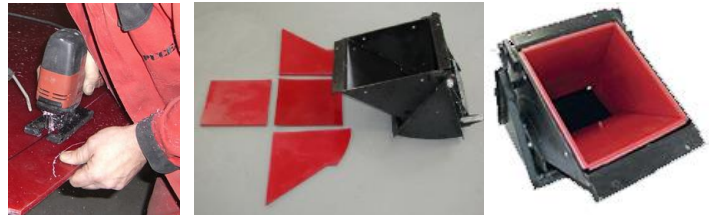


Size	2.000 x 1.000mm	2.500 x 1.250mm	3.000 x 1.500mm
Thickness	8 – 100mm	8-100mm	8-100mm
Customized sizes on request			

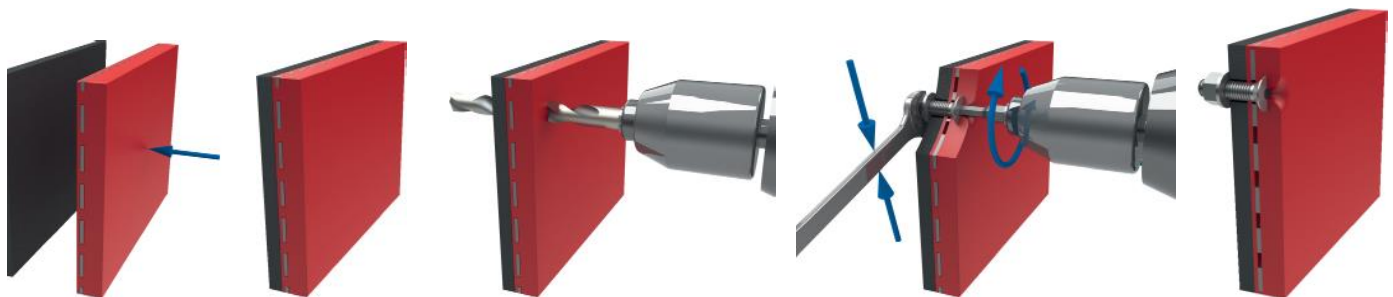
PUCEST® plates are easily cut to size using a jigsaw, following a cardboard template.

The plates can also be bent and phased. The sections are then bolted firmly in the object to be protected, the surface doesn't have to be clean down to the metal.



PUCEST® lining with aluminum sheets. The plate elasticity and plasticity allows a perfect fit against curved surfaces. The picture shows the lining of a concrete plant weigh hopper.

Hardness	DIN 53 505	Shore A	55	65	85	TIX
Abrasion	DIN 53 516	mm ³	7	5,8	9,1	39
Tensile strenght	DIN 53 504	N/mm ²	31,8	42,6	57,7	...
Tear strength	DIN 53 515	N/mm	33,9	30	45,8	...
Elasticity	DIN 53 504	%	694	593	550	...
Flexibility recoil	DIN 53 512	%	50	50	43	...



PUCEST® Panels

with perforated sheet inserts of steel or aluminum

Fejmert Mixer AB
Blommenhovsvägen 26
S-611 39 Nyköping, Sweden

Tel.: +46 155-582 00
E-mail: fejmert@fejmert.se
Web page: www.fejmert.se